

RETAIL FOR LEASE

# San Marin Plaza Novato, California



## Property Highlights:

- ±70,000 SF Grocery Anchored Retail Center
- Located in affluent San Marin area (N/W Novato)
- Various Sizes Available: (±511 SF- ±2,402 SF)
- Lease rates starting at \$1.30 PSF NNN, (\$0.53 PSF NNN est.)

**Cassidy  
Turley** / BT  
Commercial

For more information, please contact:

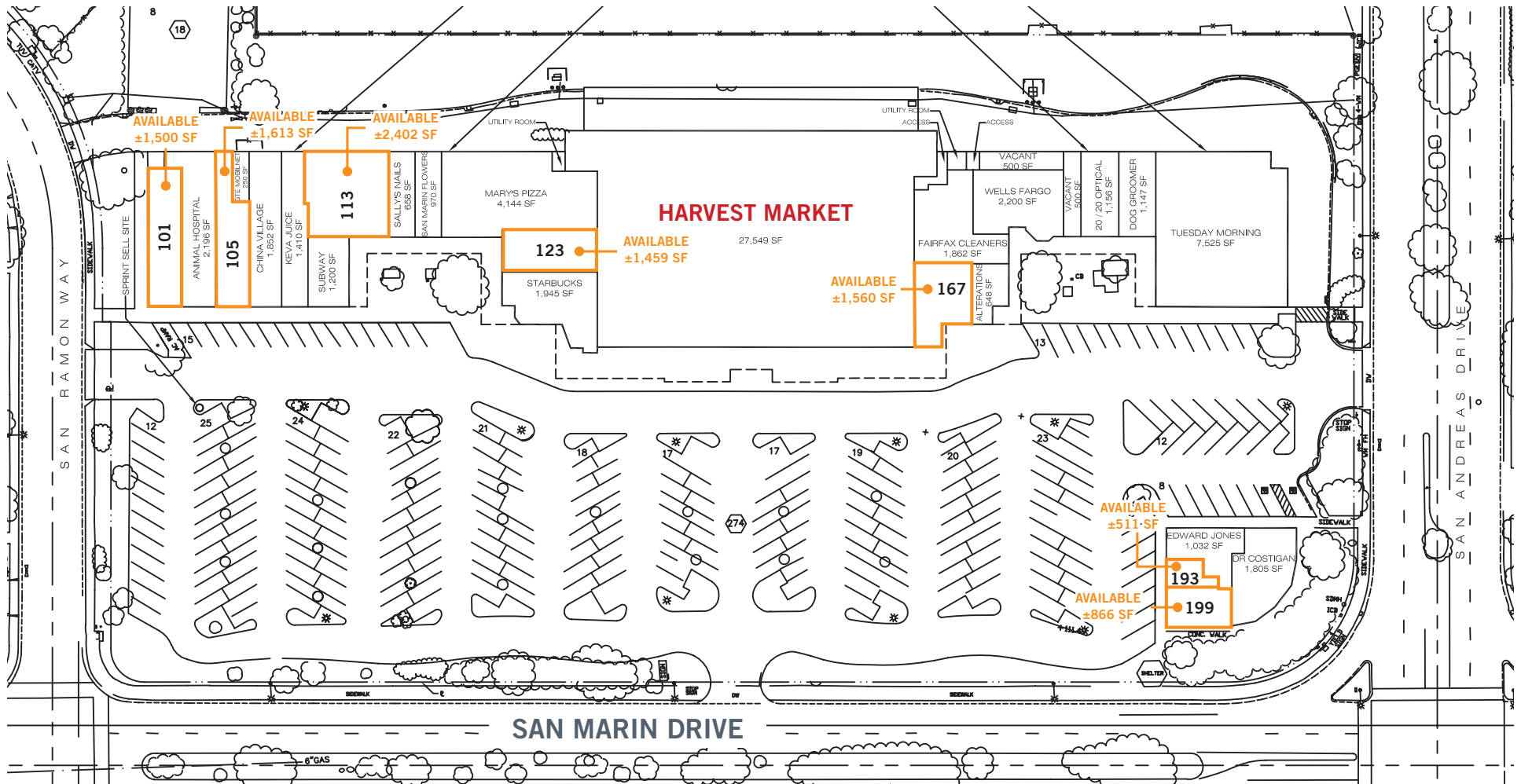
**Steve Easley**  
415-451-2438  
seasley@ctbt.com  
LIC #00378205

**Michael Golden**  
415-451-2417  
mgolden@ctbt.com  
LIC #01784238

781 Lincoln Avenue, Suite 100  
San Rafael, California 94901  
ph: 415-485-0500  
fx: 415-485-1341

[www.ctbt.com](http://www.ctbt.com)

# San Marin Plaza Novato, California



For more information, please contact:

**Steve Easley**  
 415-451-2438  
 seasley@ctbt.com  
 LIC #00378205

**Michael Golden**  
 415-451-2417  
 mgolden@ctbt.com  
 LIC #01784238

781 Lincoln Avenue, Suite 100  
 San Rafael, California 94901  
 ph: 415-485-0500  
 fx: 415-485-1341

[www.ctbt.com](http://www.ctbt.com)

# San Marin Plaza Novato, California

<b>User Space:</b>	Retail – Shopping Center	<b>Address:</b>	101 – 199 San Marin Drive	<b>City:</b>	Novato, CA 94945
<b>Rent psf:</b>	\$1.30 psf, NNN (\$0.53)	<b>Availability:</b>	±511 - ± 2,402 sf	<b>Zoning:</b>	Retail Commercial
<b>Project Center:</b>	San Marin Plaza Shopping Center	<b>Total Bldg sf:</b>	70,483 sf	<b>Parking:</b>	Approx. 5/1,000 On-Site

## Description of Location:

San Marin Plaza is a multi-tenant neighborhood shopping center located on San Marin Drive, a four-lane major thoroughfare connecting East and West Novato. Center is anchored by Harvest Market and features co-tenants including Starbucks, Subway, Tuesday Morning and Mary's Pizza Shack, proximity to Kaiser Permanente and Meridian's Rolling Hills Club, one of Marin County's largest health and fitness clubs.

## Spaces are available for lease:

- Suite 101: ±1,500 sf End-cap space adjacent to Kaiser Permanente.
- Suite 105: ±1,613 sf Former beauty salon space. Features include individual esthetician and treatment rooms along with additional plumbing to the space.
- Suite 113: ±2,402 sf Courtyard location near Subway, Mary's Pizza Shack and Starbucks. Space was previously leased to "Curves". Ideal location for a Fitness Studio or any related uses.
- Suite 123: ±1,459 sf In-line space located between Starbucks and Mary's Pizza Shack.
- Suite 167: ±1,560 sf Possible restaurant space equipped with a walk-in refrigerator, walk-in freezer, plumbing for three compartment sink, mop sink, 85-gallon commercial hot water heater, FRP on walls, restaurant quality ceiling tiles, office, storage room, restroom, and tile floors throughout. Space also allows for possible covered outside seating.
- Suite 193 - 199: ±1,377 sf Medical or Financial space in corner of pad building. ( Suite 193: ±511 sf and Suite 199: ±866 sf)

## Possible Tenants:

Spaces provide a tremendous opportunity for retailers including: Pet Supply, Bakery/Bagel Shop, Insurance Office, Mobile Phone Store, Fast Casual Take-Out, Golf and Sports Specialty Retailers, Shoe Stores, Camera Shops, Electronics Stores, Beauty Salon/Haircuts, Restaurants, Postal Services, Bank/Mortgage Office, Yoga Studios, Martial Arts Studios, Vitamin/Nutrition Retailers, Pharmacies, Day Care Centers, Frame Shops and Galleries, Photo Studios, Book Stores, Jewelry Store, Laundromat, Bike Shop, Tax Service, Juice/Smoothie Shop, etc.



For more information, please contact:

**Steve Easley**  
415-451-2438  
seasley@ctbt.com  
LIC #00378205

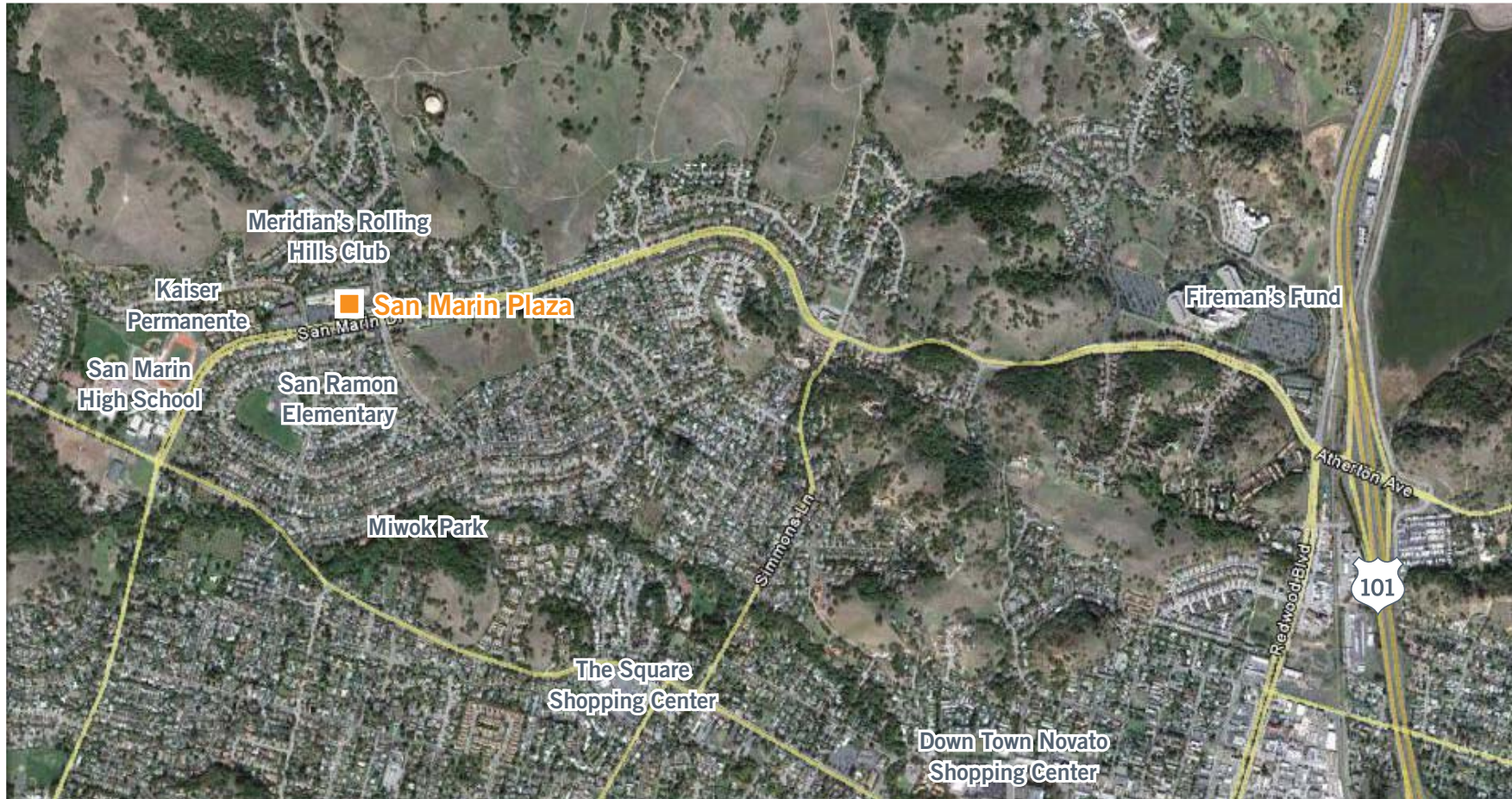
**Michael Golden**  
415-451-2417  
mgolden@ctbt.com  
LIC #01784238

781 Lincoln Avenue, Suite 100  
San Rafael, California 94901  
ph: 415-485-0500  
fx: 415-485-1341

[www.ctbt.com](http://www.ctbt.com)

# San Marin Plaza Novato, California

Aerial



**Cassidy  
Turley** / BT  
Commercial

For more information, please contact:

**Steve Easley**  
415-451-2438  
seasley@ctbt.com  
LIC #00378205

**Michael Golden**  
415-451-2417  
mgolden@ctbt.com  
LIC #01784238

781 Lincoln Avenue, Suite 100  
San Rafael, California 94901  
ph: 415-485-0500  
fx: 415-485-1341

[www.ctbt.com](http://www.ctbt.com)

# San Marin Plaza Novato, California

## Demographics

San Marin Plaza  
1 - 9 SAN MARIN DR # 199 NOVATO CA 94945

2/16/2011

Coordinates Longitude: -122.609255  
Latitude: 38.118923

	1.0 Mile Ring 3.14 sq/mi	3.0 Mile Ring 28.27 sq/mi	5.0 Mile Ring 78.54 sq/mi
<b>POPULATION</b>			
1990 Total Population	7,913	28,060	42,581
2000 Total Population	7,837	29,529	44,112
2009 Total Population	7,932	29,579	45,089
2014 Total Population	8,151	30,574	46,812
% Population Change 1990-2000	-0.96%	5.24%	3.60%
% Population Change 2000-2009	1.21%	0.17%	2.21%
% Population Change 2009-2014	2.76%	3.36%	3.82%
<b>HOUSEHOLDS</b>			
1990 Total Households	2,774	10,403	16,114
2000 Total Households	2,834	11,103	16,867
2009 Total Households	3,032	11,781	18,258
2014 Total Households	3,176	12,419	19,328
% Households Change 1990-2000	2.16%	6.73%	4.67%
% Households Change 2000-2009	6.99%	6.11%	8.25%
% Households Change 2009-2014	4.75%	5.42%	5.86%
<b>RACE</b>			
2009 White Population	6,755	24,127	36,270
2009 Black Population	141	563	883
2009 American Indian/Alaska Native	43	206	296
2009 Asian/Hawaiian/Pacific Islander	461	1,846	2,911
2009 Other Population (Incl 2+ Races)	532	2,836	4,729
2009 Hispanic Population	802	4,232	6,965
2009 Non-Hispanic Population	7,130	25,346	38,124
<b>INCOME</b>			
2009 Per Capita Income	\$45,810	\$43,771	\$44,097
2009 Median Household Income	\$90,620	\$73,552	\$73,958
2009 Average Household Income	\$119,842	\$109,898	\$108,899
2009 Average Household Size	2.6	2.5	2.4
2009 Total Owner Occupied Housing Units	2,623	8,387	12,816
2009 Total Renter Occupied Housing Units	407	3,397	5,421
2009 Total Establishments	323	2,050	2,926
2009 Total Daytime Population	5,704	32,432	46,727
2009 Total Daytime Work Population	2,340	18,208	26,639

San Marin Plaza  
1 - 9 SAN MARIN DR # 199 NOVATO CA 94945

2/16/2011

Coordinates Longitude: -122.609255  
Latitude: 38.118923

	1.0 Mile Ring 3.14 sq/mi	3.0 Mile Ring 28.27 sq/mi	5.0 Mile Ring 78.54 sq/mi
<b>POPULATION</b>			
1990 Total Population	7,913	28,060	42,581
2000 Total Population	7,837	29,529	44,112
2009 Total Population	7,932	29,579	45,089
2014 Total Population	8,151	30,574	46,812
% Population Change 1990-2000	-0.96%	5.24%	3.60%
% Population Change 2000-2009	1.21%	0.17%	2.21%
% Population Change 2009-2014	2.76%	3.36%	3.82%
<b>HOUSEHOLDS</b>			
1990 Total Households	2,774	10,403	16,114
2000 Total Households	2,834	11,103	16,867
2009 Total Households	3,032	11,781	18,258
2014 Total Households	3,176	12,419	19,328
% Households Change 1990-2000	2.16%	6.73%	4.67%
% Households Change 2000-2009	6.99%	6.11%	8.25%
% Households Change 2009-2014	4.75%	5.42%	5.86%
<b>RACE</b>			
2009 White Population	6,755	24,127	36,270
2009 Black Population	141	563	883
2009 American Indian/Alaska Native	43	206	296
2009 Asian/Hawaiian/Pacific Islander	461	1,846	2,911
2009 Other Population (Incl 2+ Races)	532	2,836	4,729
2009 Hispanic Population	802	4,232	6,965
2009 Non-Hispanic Population	7,130	25,346	38,124
<b>INCOME</b>			
2009 Per Capita Income	\$45,810	\$43,771	\$44,097
2009 Median Household Income	\$90,620	\$73,552	\$73,958
2009 Average Household Income	\$119,842	\$109,898	\$108,899
2009 Average Household Size	2.6	2.5	2.4
2009 Total Owner Occupied Housing Units	2,623	8,387	12,816
2009 Total Renter Occupied Housing Units	407	3,397	5,421
2009 Total Establishments	323	2,050	2,926
2009 Total Daytime Population	5,704	32,432	46,727
2009 Total Daytime Work Population	2,340	18,208	26,639

For more information, please contact:

**Steve Easley**  
415-451-2438  
seasley@ctbt.com  
LIC #00378205

**Michael Golden**  
415-451-2417  
mgolden@ctbt.com  
LIC #01784238

781 Lincoln Avenue, Suite 100  
San Rafael, California 94901  
ph: 415-485-0500  
fx: 415-485-1341

[www.ctbt.com](http://www.ctbt.com)

**Cassidy**  
**Turley** BT  
Commercial